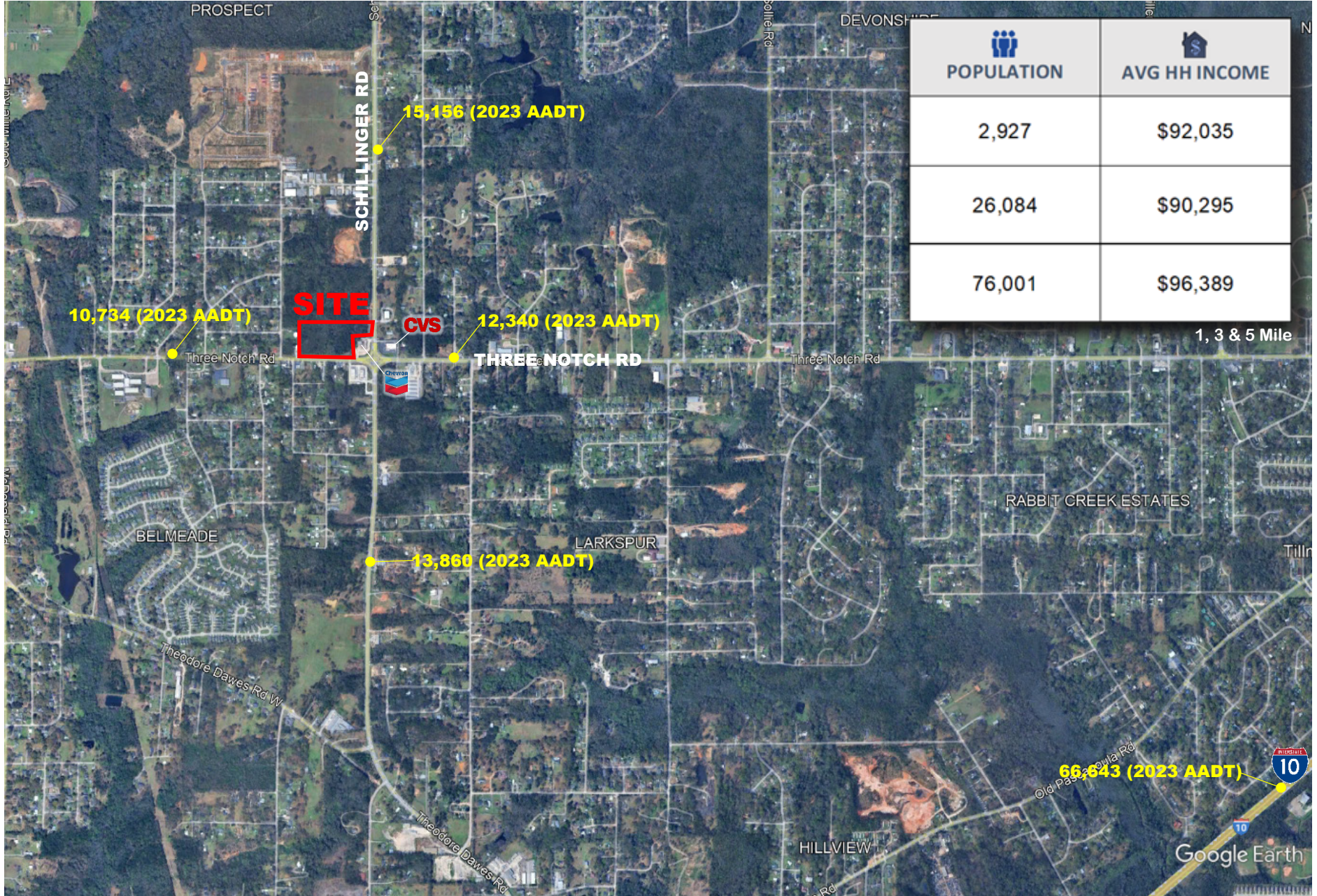




RICHMOND PROPERTIES, INC.

# PROPOSED DEVELOPMENT SCHILLINGER & THREE NOTCH, MOBILE, AL



**CARTER COOPER**

CCOOPER@RICHMONDPROPERTIESINC.COM

OFFICE: 205.969.1201 EXT 2

CELL: 205.531.4569

**HUNTER KELLER**

HKELLER@RICHMONDPROPERTIESINC.COM

OFFICE: 205.969.1201 EXT 3

CELL: 205.568.2563

**BLAIR COOPER**

BCOOPER@RICHMONDPROPERTIESINC.COM

OFFICE: 205.969.1201 EXT 4

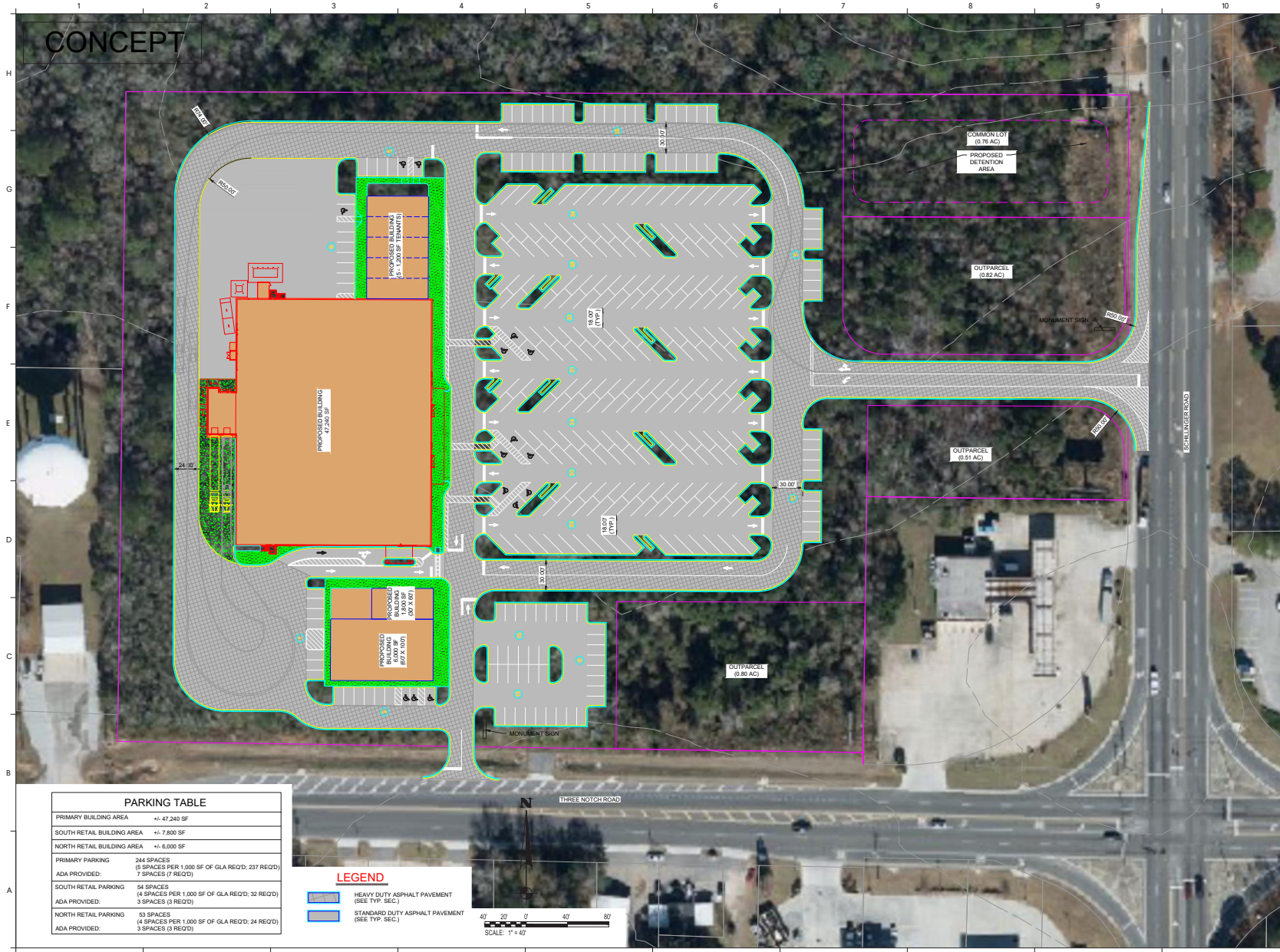
CELL: 205.746.1173





RICHMOND PROPERTIES, INC.

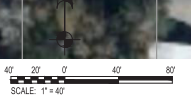
# PROPOSED DEVELOPMENT SCHILLINGER & THREE NOTCH, MOBILE, AL



PARKING TABLE	
PRIMARY BUILDING AREA	+/- 47,240 SF
SOUTH RETAIL BUILDING AREA	+/- 7,800 SF
NORTH RETAIL BUILDING AREA	+/- 6,000 SF
PRIMARY PARKING	244 SPACES (5 SPACES PER 1,000 SF OF GLA REQ'D; 237 REQ'D) 7 SPACES (7 REQ'D)
ADA PROVIDED:	
SOUTH RETAIL PARKING	54 SPACES (4 SPACES PER 1,000 SF OF GLA REQ'D; 32 REQ'D) 3 SPACES (3 REQ'D)
ADA PROVIDED:	
NORTH RETAIL PARKING	53 SPACES (4 SPACES PER 1,000 SF OF GLA REQ'D; 24 REQ'D) 3 SPACES (3 REQ'D)
ADA PROVIDED:	

**LEGEND**  

 HEAVY DUTY ASPHALT PAVEMENT (SEE TYP. SEC.)  
 STANDING DUTY ASPHALT PAVEMENT (SEE TYP. SEC.)



**GMC**

2400 5th Avenue S, Suite 200  
Birmingham, AL 35233  
T 205.878.4462  
GMCNETWORK.COM

**THREE NOTCH & SCHILLINGER ROAD**  
MOBILE COUNTY, ALABAMA

**GMC Project #XXXXXXXXXX**

ISSUE DATE

**SITE LAYOUT PLAN**

**C-101**

SUBSET OF \_\_\_\_\_

**CARTER COOPER**

CCOOPER@RICHMONDPROPERTIESINC.COM  
 OFFICE: 205.969.1201 EXT 2  
 CELL: 205.531.4569

**HUNTER KELLER**

HKELLER@RICHMONDPROPERTIESINC.COM  
 OFFICE: 205.969.1201 EXT 3  
 CELL: 205.568.2563

**BLAIR COOPER**

BCOOPER@RICHMONDPROPERTIESINC.COM  
 OFFICE: 205.969.1201 EXT 4  
 CELL: 205.746.1173

No warranty expressed or implied has been made as to the accuracy of the information provided herein, no liability for error or omissions.