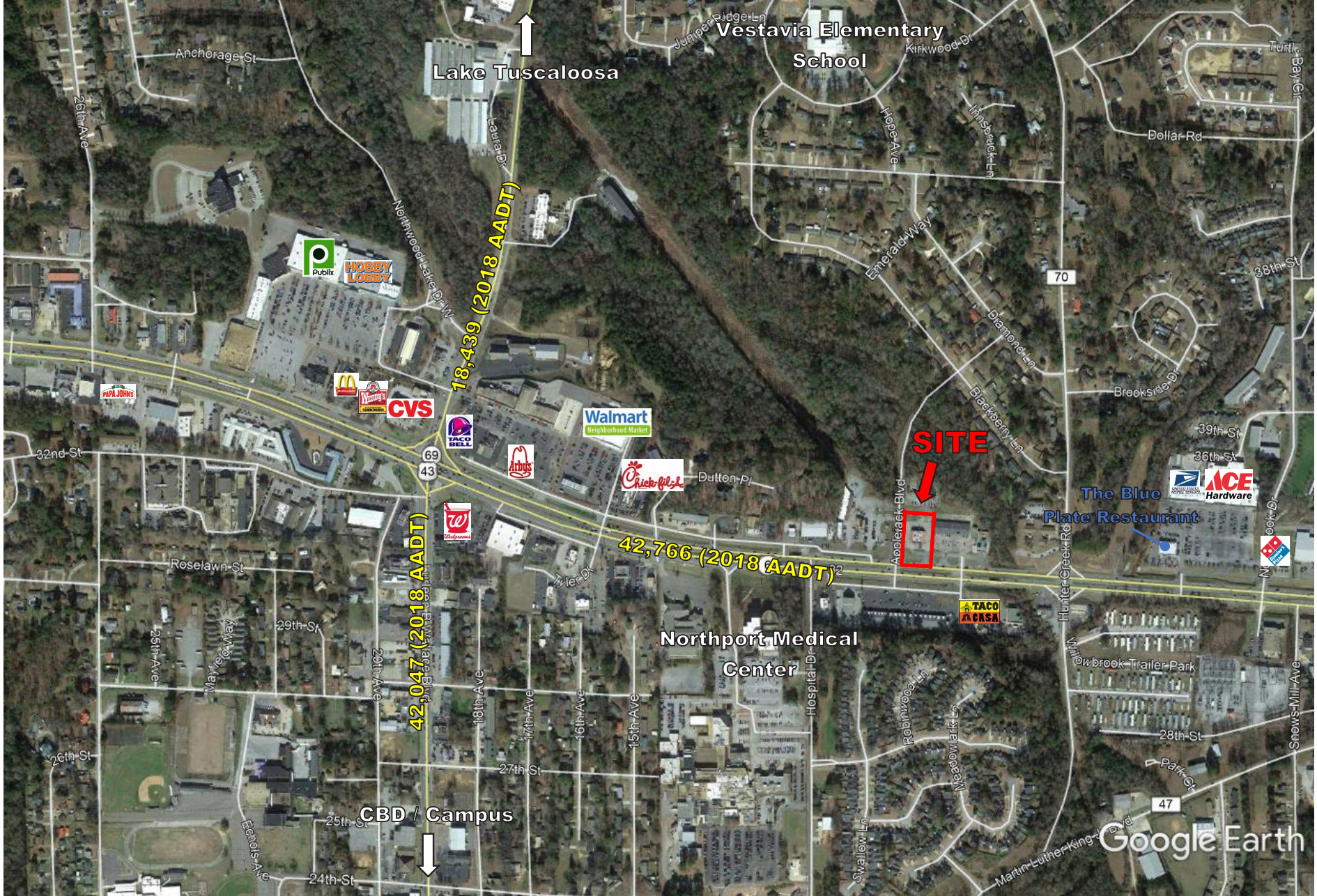




RICHMOND PROPERTIES, INC.

PROPOSED DEVELOPMENT NORTHPORT, AL



CARTER COOPER

CCOOPER@RICHMONDPROPERTIESINC.COM
OFFICE: 205.969.1201 EXT 2
CELL: 205.531.4569

HUNTER KELLER

HKELLER@RICHMONDPROPERTIESINC.COM
OFFICE: 205.969.1201 EXT 3
CELL: 205.568.2563

BLAIR COOPER

BCOOPER@RICHMONDPROPERTIESINC.COM
OFFICE: 205.969.1201 EXT 4
CELL: 205.746.1173



RICHMOND PROPERTIES, INC.

PROPOSED DEVELOPMENT NORTHPORT, AL



NORTHPORT PROPERTY TUSCALOOSA, ALABAMA	C1.0	SCHEMATIC DRAWING	GMC # 02/10/21	DRAWN BY:	SCALE: 1"=40'	2701st Avenue S Birmingham, AL 35233 T 205.879.4462 GMCNETWORK.COM	GMC

CARTER COOPER

CCOOPER@RICHMONDPROPERTIESINC.COM
OFFICE: 205.969.1201 EXT 2
CELL: 205.531.4569

HUNTER KELLER

HKELLER@RICHMONDPROPERTIESINC.COM
OFFICE: 205.969.1201 EXT 3
CELL: 205.568.2563

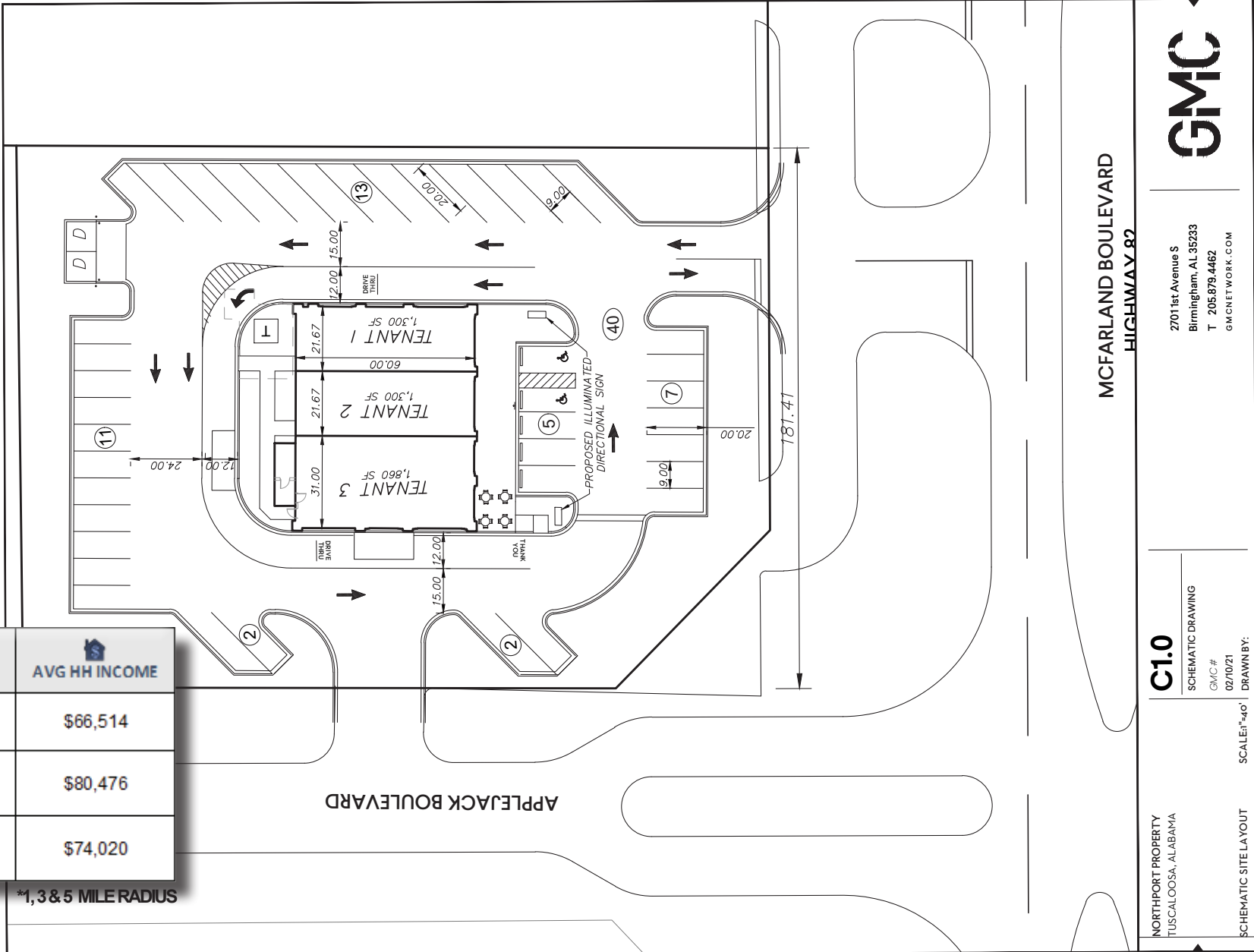
BLAIR COOPER

BCOOPER@RICHMONDPROPERTIESINC.COM
OFFICE: 205.969.1201 EXT 4
CELL: 205.746.1173



RICHMOND PROPERTIES, INC.

PROPOSED DEVELOPMENT NORTHPORT, AL



POPULATION	AVG HH INCOME
8,536	\$66,514
49,891	\$80,476
103,704	\$74,020

1/3 & 5 MILE RADIUS

MCFARLAND BOULEVARD
HIGHWAY 82



2701 1st Avenue S
Birmingham, AL 35233
T 205.879.4462
GMCNETWORK.COM

C1.0

SCHMATIC DRAWING
GMC # 02/10/21
DRAWN BY:

NORTHPORT PROPERTY
TUSCALOOSA, ALABAMA

SCALE: 1"=40'

SCHMATIC SITE LAYOUT

CARTER COOPER

CCOOPER@RICHMONDPROPERTIESINC.COM
OFFICE: 205.969.1201 EXT 2
CELL: 205.531.4569

HUNTER KELLER

HKELLER@RICHMONDPROPERTIESINC.COM
OFFICE: 205.969.1201 EXT 3
CELL: 205.568.2563

BLAIR COOPER

BCOOPER@RICHMONDPROPERTIESINC.COM
OFFICE: 205.969.1201 EXT 4
CELL: 205.746.1173