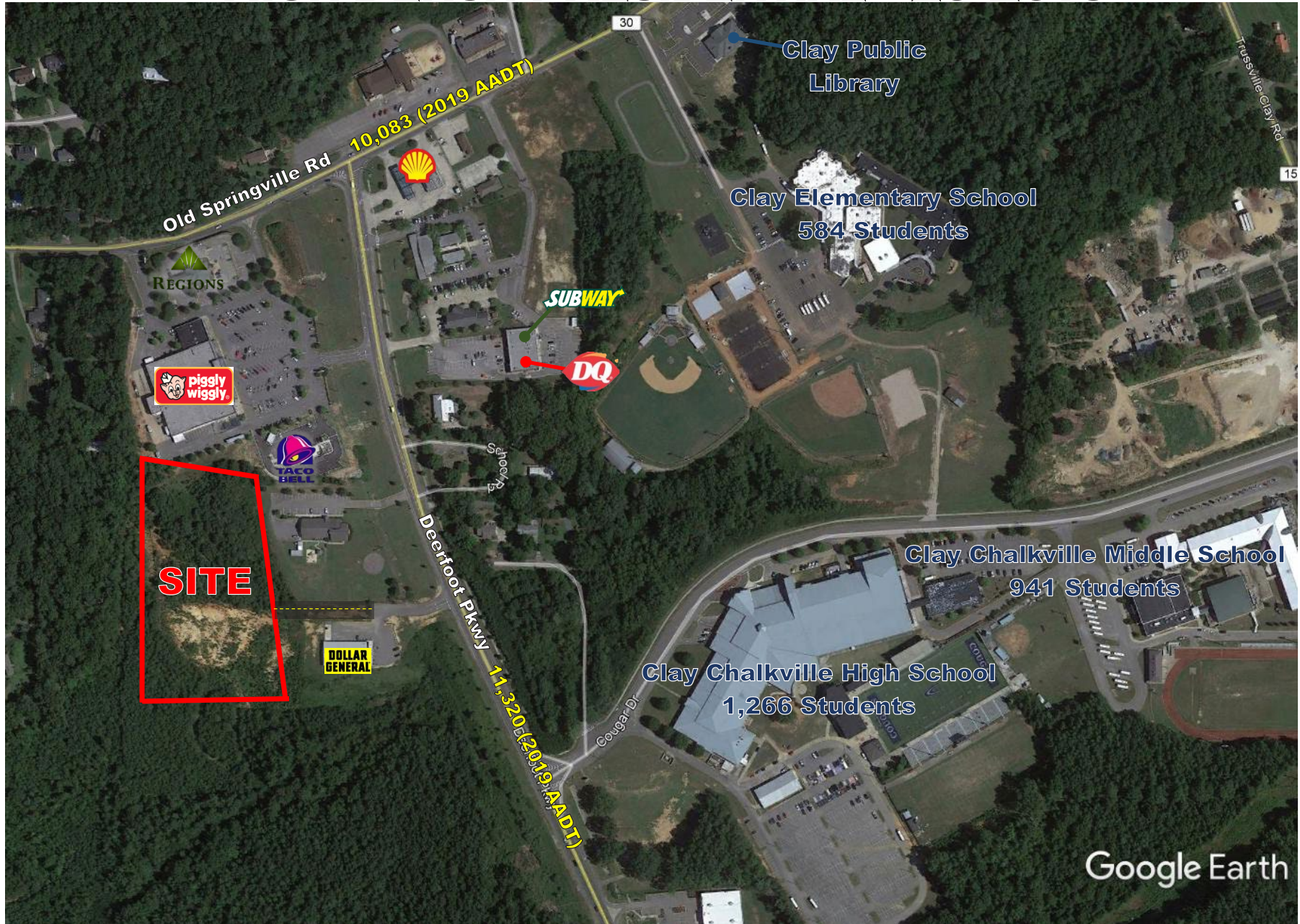




RICHMOND PROPERTIES, INC.

# PROPOSED DEVELOPMENT CLAY, AL HIGH DENSITY RESIDENTIAL - 29 LOTS



Google Earth

**CARTER COOPER**

CCOOPER@RICHMONDPROPERTIESINC.COM

OFFICE: 205.969.1201 EXT 2

CELL: 205.531.4569

**HUNTER KELLER**

HKELLER@RICHMONDPROPERTIESINC.COM

OFFICE: 205.969.1201 EXT 3

CELL: 205.568.2563

**BLAIR COOPER**

BCOOPER@RICHMONDPROPERTIESINC.COM

OFFICE: 205.969.1201 EXT 4

CELL: 205.746.1173



